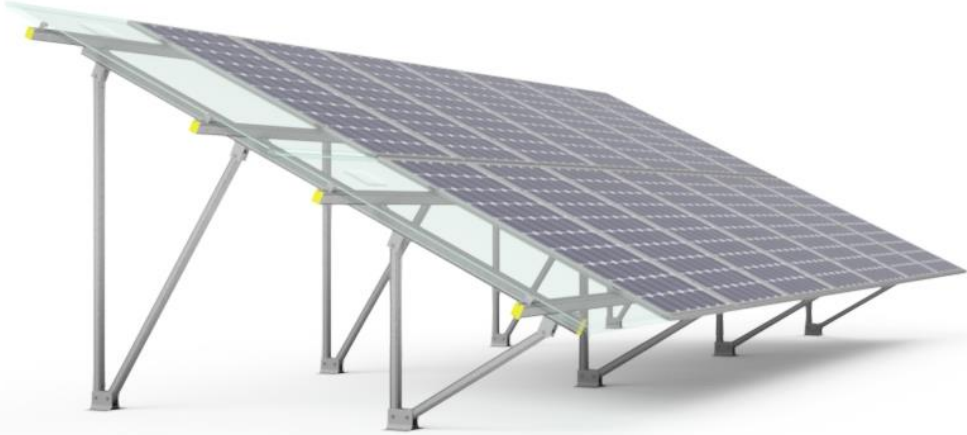


## AS116 - H2300 HELIOS Flat Roof



### Materials

- Aluminum Alloy 6005
- Inox A2 Screws

### Technical characteristics

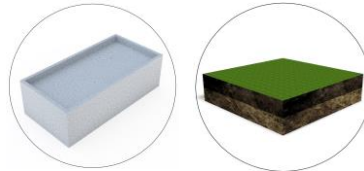
- Series: H2300
- Type: AS116
- Application: Free field & flat roof
- Alignment: Portrait-Landscape
- Inclination: 25°
- Foundation: pile ramming or concrete blocks or combination
- Distance lower PV module from the ground: 40-50cm

### Certification

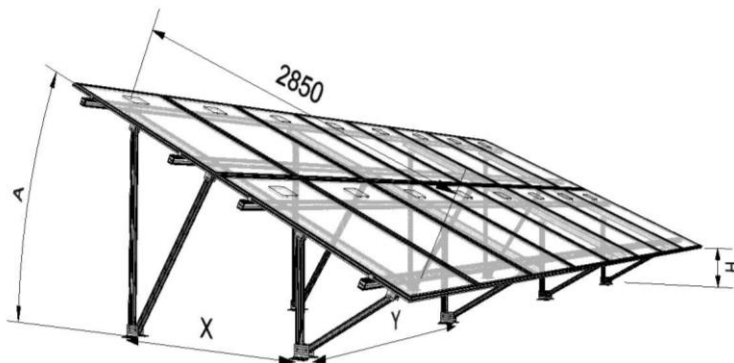
- Static Analysis According Eurocodes 1,3,9
- ISO 9001 / ISO 14001 / ISO 50001
- CE
- Technical Manual
- Alumil 20 Year Guarantee

**H2300-116** is an aluminum structure solution for 2 panels portrait or 4 panels landscape. The system is provided with all needed clamps, connection base plates (to concrete blocks or steel piles) and stainless steel assembly screws in preassembled package. The inclination is 25° / or can be customized as per exact requirements for large scale projects.

- ✓ Pre-assembled materials
- ✓ Quick installation
- ✓ Light weight mounting system



### TECHNICAL DETAILS



Profile	H2060
W = width (mm)	52
H = Height (mm)	60
Weight (kg/m)	1,486
Lengths (m)	2.4 / 2.75 / 3.6 / 4.2 / 4.7 / 5.9

